



HYDRATION BLADDER

A SLIDE-SEAL™

Opens wide for fast filling & closes tight for a leakproof seal

B REVERSIBLE

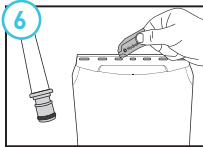
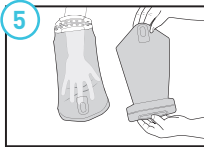
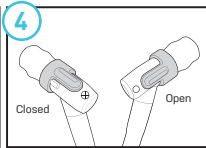
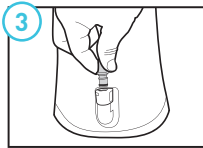
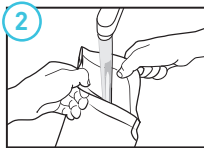
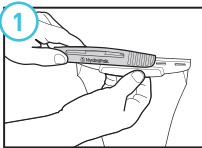
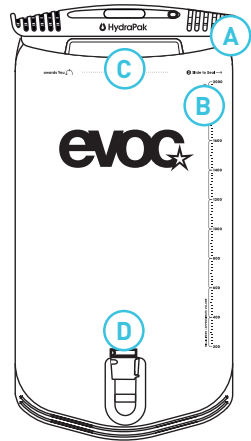
Turns inside out for easy cleaning & drying

C PLUG-N-PLAY™

Easily disconnect tube & remove reservoir from pack for convenient relling

D FLEXGRIP

Dual FlexGrips make it simple to fill, carry, and access in your pack



1 OPEN/CLOSE

To Open, pull Slider off, unfold opening and pull Flexgrips apart. Reverse steps to Close. Rinse thoroughly before first use.

2 FILLING

Make sure exit spout is sealed with Plug-N-Play Connector or a tube is connected. Do not fill past max-fill indicator.

3 PLUG-N-PLAY™

(if equipped) To start flow push insert into Connector. Listen for "click." To remove, push button on side and pull out.

4 DRINKING

Twist Bite Valve to open position, bite gently and suck to drink. Twist Valve to closed position for transport.

5 CLEANING/STORAGE

Turn Bladder inside out. Clean with detergent and brush, rinse clear. Top-shelf Dishwasher Safe. Clean and dry between uses. Store out of direct sunlight, in clean, and dry space.

6 MAINTENANCE

Apply a food-grade silicone lubricant to the slider and the plug-n-play seal ring regularly.